



A guide to sustainability

Empowering residents, businesses & schools with resources to reduce waste & live more sustainably.

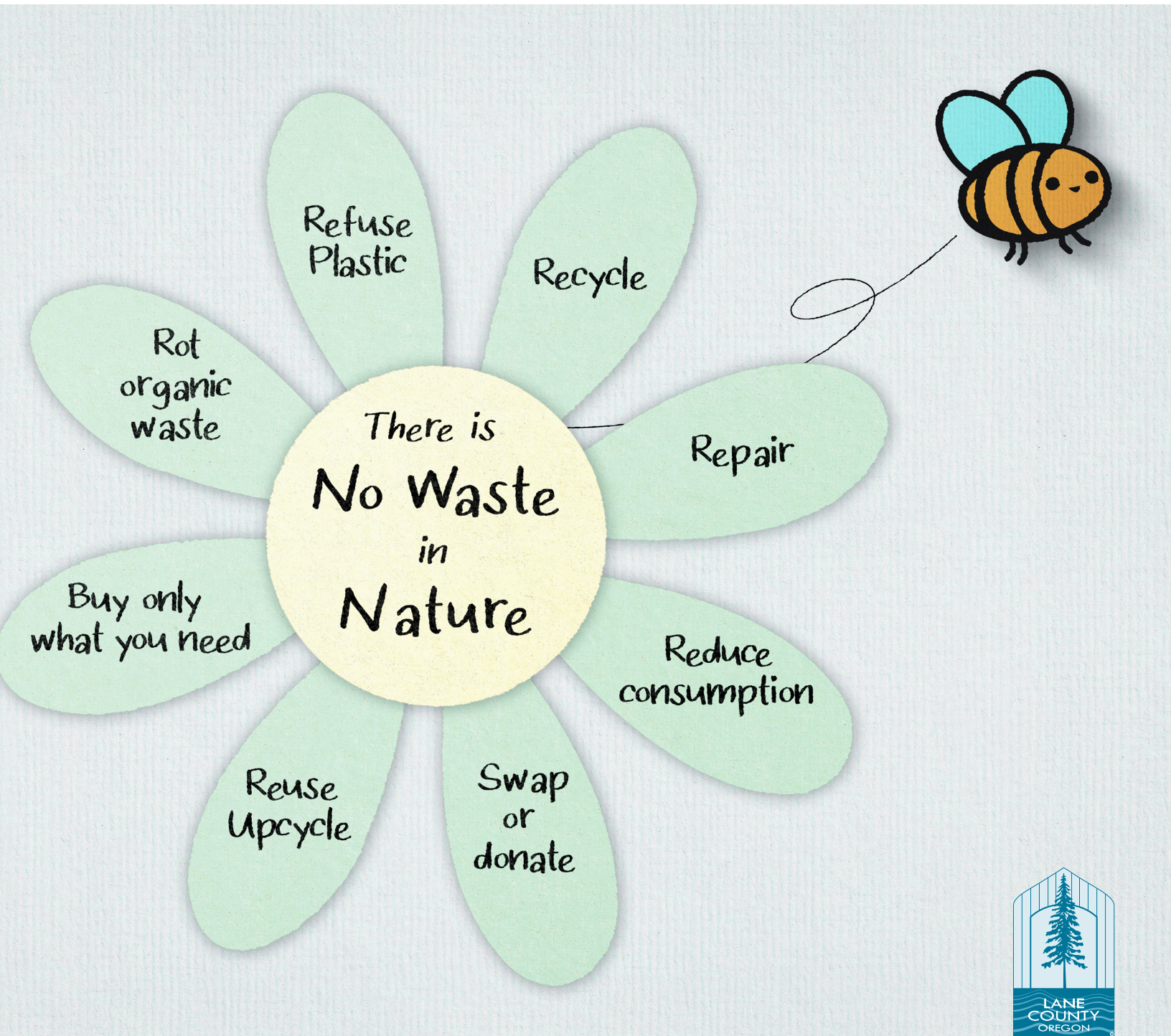


Table of Contents

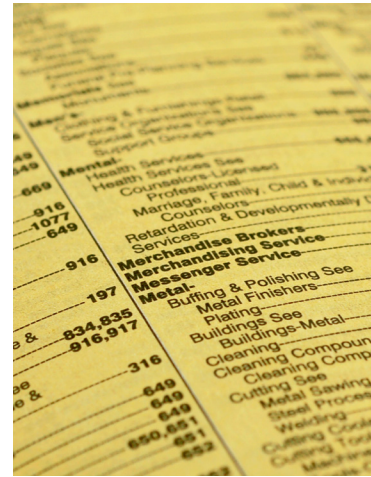


Waste Prevention & Education

OSU Extension Service	6
Reduce junk mail — it works!	6
Toolbox Project	6
Fix-It Lane County	7
Thrifty resources	7
Waste prevention smart tips	7
Master Recycler programs	
Sustainable Citizen Project	8
Churchill High School Program	8
Recycling 101 Online	8
Sustainable event resources	
Sustainable Event Services	9
Waste Free Oregon	9
Dishware & Recycling Bin Loans	9
Waste Wise school resources	
MECCA 10	
Classroom materials & grants	10
Oregon Green Schools & BRING	11
<i>Waste Wise News: School Edition</i>	11
Eat Smart, Waste Less	12
Waste Wise business resources	
BRING Rethink Program	13
E-waste & composting	13

Garbage & Recycling

Beverage handle recycling	14
Curbside food waste collection	14
Oregon BottleDrop Program	14
Multifamily recycling resources	15
Curbside garbage & recycling	
City, county, & state contacts	16
Garbage & recycling companies	17
Prohibited waste	17
Recycle Right!	18
Curbside recycling	19
Lane County transfer stations	
Garbage fees	20
Cover your load	21
Payments & discounts	21
Transfer station hours	21
Free recycling at stations	22-23
Recycling fees	24
Report illegal dumping	25
Construction & demo recycling	26
Asbestos disposal	27



Healthy Home

Paint disposal & recycling	28
Sharps disposal	28
Hazardous waste disposal	29
Green cleaning	30
Managing unwanted medications	31
Switch to eco-friendly cleaners	31
Electronic waste (e-waste) disposal	32
Fluorescent lighting disposal	32
Battery recycling	33
The dangers of lithium batteries	33

Yard & Garden

Composting at home	34
Master Gardener Program	34
Gardening without chemicals	35

Reuse & Recycling Directory

Pages 36-39

A guide to over 80 local resources in Lane County that accept materials to reuse and recycle, offering creative solutions for waste reduction.



Download the Waste Wise Lane County app for answers to recycling questions, to schedule household hazardous waste appointments and report illegal dumping.

Lane County Waste Management Division
 3100 East 17th Avenue | Eugene, Oregon 97403
 Main Office (541) 682-4120
lanecountyor.gov/wastewise



Lane County Public Works Waste Management

The Waste Management Division of Lane County Public Works operates the Short Mountain Landfill and 15 transfer stations throughout Lane County. Our mission is to "provide safe, responsible, and economical recycling and disposal services while respecting the environment and communities we serve." In addition to waste disposal and recycling services at these sites, we provide safe disposal options for hazardous waste and other materials. Lane County collaborates with local partners to offer education, tools, and resources that residents and businesses can use to reduce waste, conserve resources and live more sustainably.

Working together for a better future

In the 1980s, the U.S. Environmental Protection Agency (EPA) established solid waste disposal laws to prevent the human health dangers caused by garbage disposal. These rules direct each state to develop solid waste systems that prevent pollution at landfills, maximize the use of recoverable materials, and encourage resource conservation. In 1983, Oregon legislators established the Opportunity to Recycle Act, which directs cities and counties to offer recycling services and prioritize efforts to reduce waste first—including reuse, recycling, and compost options—and then, as a last resort, landfill or incinerate waste.

Residents, businesses, local governments, and organizations all participate in making waste, and we must all be part of the solution to address the issue. This guide offers tips to use less, reuse, and recycle more to protect the environment, create jobs, and build a stronger local economy.

Tip: Want to understand the full impact of what we buy, use, and throw away? Visit [storyofstuff.org](https://www.storyofstuff.org).

Help Lane County reach its recovery goal!

Lane County aims to achieve a 63 percent recovery rate by 2025. In 2021, residents recycled and composted 49.7 percent of their trash. The recovery rate is the percentage of total waste generated that is recovered for recycling, composting, or energy recovery rather than landfilling. Achieving this goal could reduce global greenhouse gases by an estimated 308,000 metric tons, a CO₂ equivalent equal to taking 64,000 cars off our roads annually!



Waste Wise Lane is on Facebook & Instagram.
Follow us today. [LaneCountyOR.gov/WasteWise](https://www.lanecountyor.gov/WasteWise)

Who we are

Lane County Waste Management Division manages solid waste inside Lane County. The division's approximately 100 employees operate 15 transfer stations (spread across an area the size of Connecticut) and the Short Mountain Landfill eight miles south of Eugene. Short Mountain is the only permitted municipal solid waste landfill in Lane County, and accepts 1,000 tons per day. Our employees help customers recycle and manage hazardous waste from households and businesses. They also assess and collect user fees, drive trucks transporting waste from transfer stations to Short Mountain, and operate heavy equipment that builds and protects the landfill.

We also manage Lane County's largest wetland mitigation site, screen incoming loads for hazardous waste, provide waste reduction and recycling education, enforce illegal dumping laws, and clean up illegal dump sites alongside 1,400 miles of Lane County roads. We offer an award-winning Master Recycler educational course with more than 1,000 graduates, and collaborate with partner agencies, commercial garbage companies, nonprofits, recyclers, and other stakeholders to achieve community-wide solutions.



We are truck drivers, equipment operators, technicians, administrators, customer service professionals, subject matter experts, educators, and scientists who are genuinely passionate about our work.



Follow the Waste Wise blog for sustainability & waste prevention news you can use. LaneCountyOR.gov/Blog



Toolbox Project

ToolBox Project supports a volunteer-driven tool-lending library and pop-up Fix-It Fairs open to residents of Lane County. The nonprofit empowers people and builds community around reuse, repair, and sustainability by sharing tools, resources, knowledge, and skills. Borrow from the Toolbox library of more than 1,500 tools, become a member, get current hours, or learn more at eugenetoolboxproject.org or call or text (541) 838-0125.



OSU Extension Service

The Lane County Extension Service offers expertise and classes to foster healthy families, communities, economies, and the environment. For a list of courses on gardening, food preservation, 4-H Youth programs, nutrition education, and more, visit extension.oregonstate.edu/lane or call (541) 344-5859.



Oregon State University
Extension Service
Lane County

Reduce junk mail—it works!

One hundred million trees are cut down yearly to produce more than 85 billion mail pieces. Here are five easy steps to reduce junk mail:

1. Set a zero-waste goal. Consider automatic monthly payments from your credit card, bank, or online bill pay.
2. Sign up with Catalog Choice at catalogchoice.org to have your name and address removed from nearly 95 percent of catalog mailings.
3. Register with DMAchoice.org and pay a modest fee for customized mail preferences for 10 years.
4. Stop credit card and insurance offer mailings for five years by going to optoutprescreen.com or calling 1-888-5-OPT-OUT.
5. Avoid joining new mailing lists. Remember to click the box "I don't want to receive promotional mailings."



Tools & resources for residents & businesses to reduce waste & live more sustainably. LaneCountyOR.gov/WasteWise

Waste prevention smart tips

Consider this: everything in your garbage can is something you paid for, either directly or indirectly. Check out the list below to increase the total in your savings account instead of your garbage can.

- Ask yourself: Is this product recycled or recyclable? This decision reduces the environmental impacts from the start.
- Avoid packaged food in separate compartments or meal-in-one containers that are expensive and produce more waste.
- Reduce the purchase of individually packaged snacks. Buy in bulk when possible.
- Buy the fresh food you need for each meal and take any leftovers for a second meal.
- Consider buying reusable products like napkins, razors, cups, and utensils instead of disposable options.
- Evaluate refillable cleaning options for laundry detergent, soap, cleaning spray, and more.
- Reduce disposable plastic packaging like plastic wrap and plastic bags.
- Utilize reusable containers and reuse plastic bags multiple times for storing vegetables and other food products.
- Visit local thrift stores for used items like household furnishings, clothing, and electronics instead of buying new.
- Rent or borrow instead of buying new items used infrequently, like tools, lawnmowers, camping equipment, and specialty items.



Thrifty resources

Purchasing goods at thrift stores, secondhand boutiques, and garage sales is a great way to avoid buying new items while saving cash and natural resources.

In addition to local thrift stores such as BRING, Goodwill, Habitat for Humanity of Central Lane, and St. Vincent de Paul, check out some of these websites when thinking about your next purchase:

- eugene.craigslist.org
- eugenetoolboxproject.org
- facebook.com/marketplace
- freecycle.org
- buynothingproject.org
- kindista.org



**FIX
MEND
REPAIR**

JOIN THE REPAIR REVOLUTION

See our online directory of more than **200** repair businesses and learn about Fix-It Fairs, repair resources and more.

fixitlanecounty.com

Master Recycler programs



The Master Recycler Program presents a series of FREE classes for the public. Waste Wise Lane County offers twice-yearly enrollment (fall and spring) at the Waste Management Division in Eugene, featuring online and in-person courses. Topics and speakers include *Household Hazardous Waste*, *Advanced Recycling Technology*, and the *Sustainable Citizen Project*

(see information on this page)—as well as “field trips” to local waste prevention and waste management facilities.

To view the schedule of topics, register for a class, or watch a recording of past webinars, visit lanecountyor.gov/wastewise-masterrecyclers, email kelly.bell@lanecountyor.gov or call (541) 682-2059.



Being a Master Recycler is more than just recycling—it's a family of passionate people who inspire neighbors and coworkers to live well with less waste.

Sustainable Citizen Project

The new *Sustainable Citizen Project* will teach program participants the highest-impact categories and the ‘right-now’ solutions to address the climate crisis, including actions to transform personal consumption, workplace practices, and governmental policy. Topics covered include reducing wasted food, transportation, sustainability at home, land management, electricity, materials management, and empowering women. The class will include facilitated discussion on weekly topics, videos, small group collaboration, presenters, tours, outside reading, and independent research. To learn more, email kelly.bell@lanecountyor.gov, call (541) 682-2059, or visit lanecountyor.gov/wastewise-masterrecyclers.

Churchill High School Master Recycler Program

The Rachel Carson Environmental Science Academy provides the only school-based Master Recycler training program in the state using the same presenters, tour sites, and training materials as the adult class, including *Recycling 101 Online* through Oregon State University (see information on this page). Twenty high-school seniors complete this award-winning training each year. For more information, call (541) 790-5264.

Recycling 101 Online

Whether you're looking to develop your professional understanding or hoping to make a difference in your home and community, this online course offered through Oregon State University will help you better understand recycling and waste management in Oregon. Learn about the larger issue of consumption, from how much waste we generate to how it's managed in our community. *Recycling 101* is free-of-charge to those enrolled in Lane County's Master Recycler Program, while a modest fee is charged for non-Master Recyclers. For more information, visit tiny.cc/recycling-101.



Take a free, nine-week course to become a Master Recycler.
LaneCountyOR.gov/WasteWise-MasterRecyclers

Sustainable event resources

Large events: Sustainable Events Services Program

Waste Wise Lane County, in partnership with the city of Eugene and Action Rent-All & Events, offers durable dishware and water bottle refill stations to event producers that want to avoid disposable paper plates, plastic forks, plastic cups and other materials that end up in the trash. The Sustainable Events Services (SES) Program will deliver dishware cleaned and sanitized for your event and collect the dirty dishes after its conclusion—all for much less than the cost of purchasing disposable food service ware

The SES Program allows your event to incorporate high-quality melamine bowls, plates, glasses, utensils. All dishware is microwave-safe, BPA-free, NSF-certified—and secure, sturdy, and stackable in various sizes.

Additionally, the program offers up to 10 basin-style water bottle refilling stations to reduce the use of plastic bottles.



For more information, visit lanecountyor.gov/wastewise-events and for reservations visit bit.ly/LaneDishware.

Waste Free Oregon

Waste Free Oregon offers zero waste management services to help events and venues ensure materials generated are managed sustainably. For more information, contact Shari Smith at (541) 232-2307 or ShariBeadsAndGardens@yahoo.com.

Small events: Dishware Loan Program

Waste Wise Lane County offers kits of reusable utensils, plates, cups, and napkins for small events. Four kits in sets of 25 are available on a first-come, first-served basis. The sets are not matching but are perfect for informal occasions. For more information, visit lanecountyor.gov/wastewise-events, email kelly.bell@lanecountyor.gov, or call (541) 682-2059.



Recycling Bin Program

Recycling and compost bins are available for event planners on a first-come, first-served basis. For more information, visit lanecountyor.gov/wastewise-events, email kelly.bell@lanecountyor.gov, or call (541) 682-2059.



Take your event to the next waste-prevention level. Transform it today. LaneCountyOR.gov/WasteWise-Events



Waste Wise school resources

Waste Wise Lane County and its partners offer FREE resources and assistance for your school's waste reduction and sustainability programs.

The Materials Exchange Center for Community Arts (MECCA)



MECCA is a Eugene nonprofit that sells secondhand arts and crafts supplies. According to its website, the nonprofit is "driven by our commitment to inspiring creativity, supporting education, and reducing waste." It also has a section full of supplies that are available for FREE to teachers and educators in schools, community organizations, clubs, service groups, home schools, churches, non-profits, and social justice organizations. More at materials-exchange.org.



Classroom materials

"An Apple Isn't Just an Apple" workbook illustrates how food is grown and the carbon impacts of wasting food (*available in Spanish). The "Kid Stuff" workbook offers fun activities emphasizing the

3-Rs—reduce, reuse, and recycle.



Waste reduction grants



Elevate your waste reduction projects with a \$500 grant. Past projects include washable classroom party kits, hand dryers, and water bottle refill

stations. For more information, contact Angie Marzano, Waste Wise Lane County Program Supervisor, at angie.marzano@lanecountyor.gov or (541) 682-6536.

New site for school sustainability resources

Understanding why environmental sustainability matters is vital for educators and students because real-world, climate change impacts are here and now.

To help address this need, WasteWiseLane.org will launch in 2024. The new county-managed site will organize sustainability content by grade, subject, and program focus and be state standards aligned.

Stay up-to-date on the site's progress at lanecountyor.gov/wastewise-schools or by following Waste Wise Lane County's social media channels.



It's your future. Help shape it, in & out of the classroom. Visit LaneCountyOR.gov/WasteWise-Schools

Oregon Green Schools (OGS) certification



OGS provides free assistance and support to schools across the state in establishing and maintaining conservation and sustainability

programs that shape the next generation of environmental leaders. Oregon Green Schools offers several certification tracks, such as "Green Lunchrooms" and "Reduce, Reuse, Recycle."

Its Green Lunchrooms track is a popular choice, as school lunchrooms generate food waste and garbage, including milk cartons and endless plastic items. With OGS, students, teachers, and parent volunteers conduct information-

gathering activities, such as lunchroom audits and in-person interviews. This data helps form an action plan for projects, such as composting and waste prevention education, complete with project deadlines and evaluation metrics.

County schools completing these activities are eligible for a \$500 grant to help schools complete their action plan projects. Learn more at ogslanecounty.org or email Joshua at greenschools@live.com. *This article was originally published in MOM Magazine.*



Waste Wise School Edition



Educators, administrators, or students interested in waste prevention and sustainability: check out *Waste Wise News: School Edition*. It features resources geared toward school audiences and touches on critical sustainability topics, including curriculum, electronics, climate resilience, activism, fashion, finances, energy, food, water, and transportation. The *Edition* is distributed to county schools, public libraries and other locations. Download at lanecountyor.gov/wastewise-schools.

BRING: In the classroom



BRING provides free in-classroom presentations, Lane County waste-handling facilities tours, and additional opportunities to engage students in waste prevention for grades K-12. BRING's robust, hands-on curriculum helps students learn about everything from worms to waste prevention. Programs are in partnership with Waste Wise Lane County. More at bringrecycling.org/learn/in-the-classroom

Landfill & transfer station tours

BRING-hosted tours of Short Mountain landfill, Glenwood Central Transfer Station, and BRING's Planet Improvement Center give a full perspective of what happens to our waste locally after it is thrown out, recycled, or reused. More at bringrecycling.org/learn/in-the-classroom.



Coming soon: A new sustainability resource for county teachers, administrators & students. WasteWiseLane.org



Eat Smart, Waste Less

Did you know a family of four could save \$2,000 annually by eating the food they buy?

Waste Wise Lane County's *Eat Smart, Waste Less* program provides tips and strategies on menu planning, purchasing, cross-utilization of food, storage, and preparation practices to prevent wasted food and related costs. More information at [eatSMARTwasteless.tips](https://www.lanecounty.gov/wastewise-food).



- **Shop with meals in mind**—Make a list of meals and only buy what you think you'll use. Try to avoid bulk "deals" if you won't end up eating what you buy.
- **Prep now and eat later**—Prepare ingredients in advance to save time, effort, and money. Try cooking several meals at once and freezing the rest for a later date. Make a soup or freeze individual ingredients if you notice something going bad.
- **Keep it fresh**—Store fruits and vegetables where they last the longest.
- **Eat what you buy**—Use leftovers and ingredients before purchasing more. Create an "Eat This First" section in your fridge.
- **Measure wasted food**—Measure how much food you and your family waste over four weeks. You might be surprised!
- **Plan micro-shopping trips**—Plan a trip on your way home for a single meal instead of stocking up.

Wasted food prevention tools

Each year, an estimated 30-40 percent of all food produced and imported for consumption in the U.S. is never eaten. Of that food, 40 percent is estimated to come from restaurants, grocery stores, and commercial kitchens. Visit [lanecounty.gov/wastewise-food](https://www.lanecounty.gov/wastewise-food) to access food business resource guides provided by the Oregon Department of Environmental Quality (ODEQ), the Environmental Protection Agency, and Waste Wise Lane County.



The U.S. spends over \$218 billion growing & processing food that is never eaten. [LaneCountyOR.gov/WasteWise-Food](https://www.lanecounty.gov/WasteWise-Food)

Waste Wise business resources



Rethink Business Program

In partnership with Waste Wise Lane County, the Rethink Business program utilizes expert coordinators to guide businesses through a checklist assessment of sustainable practices and conduct on-site facility visits. Participating organizations

receive recommendations, tools, and ongoing support to be more environmentally conscious and resource-efficient. Customized reports detail opportunities to conserve resources and save money. Information about tax incentives, rebates, and grants is also available. For more information, visit bringrecycling.org/rethink.

Electronics waste



NextStep Recycling is the only volunteer-based nonprofit electronic recycler for residential, municipal, and commercial accounts in Lane County.

The organization serves all of Oregon. NextStep offers free e-waste pickups for schools, nonprofits, and businesses. The nonprofit is committed to keeping usable electronics out of landfills, so customers can feel good about recycling with NextStep. Visit the Eugene Recycling Center near the corner of Jackson St. and W. 2nd Ave. For more information, visit nextsteprecycling.org.

Free recycling boxes & posters

Make recycling easier! Order free recycling boxes and posters for every area of your office. A smaller desk-side box fits under your desk, and a larger central collection box is perfect for copy and break rooms. Recycling and compost posters can be posted on or above recycling containers or emailed to coworkers as a reminder of what can and cannot be recycled. Place your free order today. Email rethink@bringrecycling.org or call (541) 746-3023.



Business composting

Lane County throws away 90-plus million pounds of food waste each year in the local landfill. Eugene, Springfield and Veneta businesses can do their part to ensure food scraps are turned into compost. Sign-up your Eugene, Springfield, or Veneta business in four easy steps:

- Contact your garbage company to sign-up for service.
- Schedule a training session with your garbage company for free technical assistance, containers, posters, decals, and training materials.
- Raise awareness with your staff by communicating the new compost collection system.
- Start composting.



Businesses generate lots of waste. Improve your bottom line through waste prevention. LaneCountyOR.gov/WasteWise-Business



Curbside food waste collection (Eugene, Springfield, & Veneta)



Curbside food waste collection is available for residential customers in Eugene, Springfield, and Veneta. Customers can compost food scraps in their yard debris roll carts. Acceptable materials include plate scrapings, meat, bones, dairy, baked goods, kitchen trimmings, and all fruits and veggies. No paper products, plastics, compostable bags, compostable service ware (i.e., plates, cups, bowls, cutlery, etc.), or other materials allowed. **FOOD ONLY!** For more information, visit lanecountyor.gov/wastewise-food.

BottleDrop Redemption Center

Most beverage containers in Oregon (4 oz. – 1.5 liters) are awarded a 10-cent refund value that is available if the container is returned (except milk, infant formula, liquid meal replacements, wine, and spirits). BottleDrop offers a fast, easy, and clean option for residents who want to return empty containers for a deposit. For more information, visit bottledrop.com.

Self-service returns

Return up to 350 empty containers per person daily using self-serve, bottle and can-return machines. Receive a cash refund using the onsite pay station, or put refund values on a BottleDrop account.



Green Bag Program

Fill up a "Green Bag" with empty containers and use the drop door at a local redemption center, BottleDrop Express, or partner retailer. Have the refund credited to a BottleDrop account.

Blue Bag Program

BottleDrop allows nonprofit groups to sign up for an account and distribute "Blue Bags" to supporters. When supporters fill the "Blue Bags" with empty containers and drop them off at BottleDrop locations, containers will be counted and funds entered into the nonprofit's account.

Handle recycling

Paktech, a local manufacturer of beverage handles made from 100 percent post-consumer content resin, has set up convenient drop-off locations for recycling beverage handles. For a list of current drop-off locations, visit paktech-opi.com/recycle.



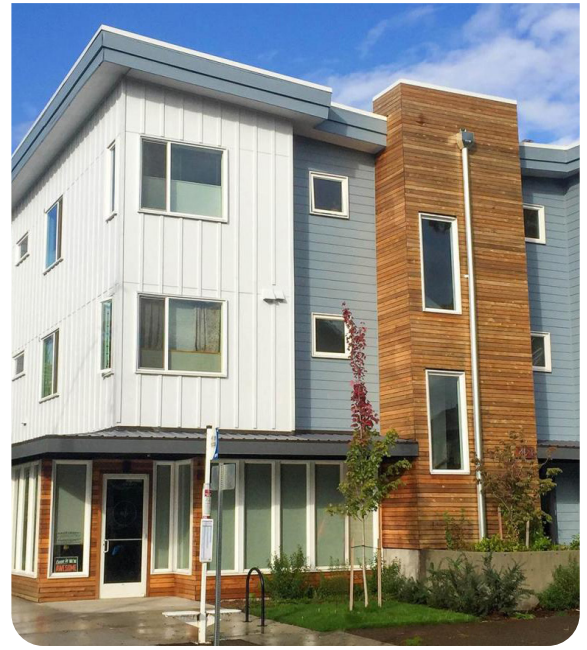
Springfield, Eugene & Veneta residents, put food waste in yard waste carts! LaneCountyOR.gov/WasteWise-Food

Waste Wise multifamily recycling resources

State law (ORS 90.318) requires property owners of apartments, condominiums, and other multifamily communities with five or more units to provide recycling and garbage services in the following cities and urban growth boundary areas: Creswell, Eugene, Florence, and Springfield. Property managers must provide recycling opportunities and education to residents. Education is required once per year.

We are here to help!

Lane County staff can help property managers and residents with technical assistance, resources, and presentations. Clear instructions and educational signage effectively promote recycling and reduce contamination in multifamily communities. Educational materials are available in English and Spanish.



Free resources:



Guide for property managers

Welcoming new tenants



- Use the "Move in Packet" offered on our website as part of the rental agreement process to explain the recycling program to all new tenants.
- Discuss waste and recycling in your move-in tour for new tenants to show them where the nearest recycling area is. Describe rules and expectations regarding use of containers and what to do with bulky items.
- Distribute the Lane County Recycling Guide to all tenants (available in English and Spanish) to help them find answers to disposal questions.
- Use the "Order Supplies" button at lanecounty.org/multifamilyrecycling to get as many as you need.

Clear instruction is key to success

Maintain all waste disposal areas with labels and instructions for all containers. Ask your collection service for supplies or use free resources available at lanecounty.org/multifamilyrecycling. If you do not see what you need, please fill out the survey form to let us know.

More ideas and resources

Display information and instructions in common areas, and/or in printed distribution or email communications. Frequent reminders help residents learn good habits and where to get more information. Visit lanecounty.org/multifamilyrecycling for posters, flyers, recycle guides and more.

- Keep disposal enclosures clean and well signed. Use security cameras to deter (or proscribe) improper use of the area.
- Educate tenants clearly on what to do with waste that doesn't fit in the dumpster.
- Remind residents on a regular basis about your community's recycling program with flyers, posters and more. Respond to improper disposal actions with specific reminders of rules.
- Invite a Master Recycler or other specialist to talk with residents at your tenant association meeting or other on-site events.
- Get in touch. Lane County Waste Reduction Specialists are here to help, call (541) 682-4239 or email tcpmultifamily@co.lane.or.us.



Waste prevention tips

Simple changes make a big difference

If you think about it, everything in your garbage can is something you paid for, either directly or indirectly. Here are easy changes to purchasing habits that will fill your savings account while reducing global pollution from production and manufacturing:

- Avoid food packaged in separate compartments or meal-in-one containers that are expensive and produce more waste.
- Buy in bulk when possible.
- Buy only the amount of fresh foods you will use before they go bad and take left overs to work.
- Instead of disposable options, choose reusable napkins, razors, cups, utensils and more.
- Rather than costly wipes, use liquid products and rags made from old towels, tee shirts and more.
- Wash and reuse product containers and plastic bags instead of purchasing new storage containers, cling wrap and zip lock bags.
- Visit local thrift stores for used items like household furnishings, clothing, furniture and electronics instead of buying new.
- Rent and borrow instead of buying items used infrequently like tools.



Tool Lending Library

The Toolbox Project is a tool-lending library available to residents of Lane County. To view current inventory or for more information, visit eugene.toolboxproject.org or call (541) 838-0125.



Reuse Resources

Shopping at thrift stores, secondhand boutiques and garage sales is a great way to avoid buying new items—saving both cash and natural resources. In addition to local thrift stores like BIRRO Recycling Goodwill, Habitat for Humanity of Central Lane and St. Vincent de Paul, try these ideas when thinking about your next purchase:

- eugene.craigslist.org
- eugene.toolboxproject.org
- facebook.com/markplace
- freecycle.org



Moving guide

Plan before you pack (and unpack)

Before you begin packing, set aside any items you no longer want. This guide will help you make the best plan for the things you no longer need.

One of the biggest challenges may be locating and disposing of packing boxes

- Use your bags and empty containers to pack first.
- If you start looking for packing boxes before you move, you can find used boxes online freecycle.org, eugene.craigslist.org, facebook.com/markplace.
- Some movers will provide boxes at a reasonable price and buy back gently used boxes.
- When you're done, list boxes online if they're still usable or latent for recycling collection.



Find new homes for what you no longer need

You can sell or donate unwanted items instead of throwing them away:

- Have a garage sale or community swap. Ask your property manager if you can hold a garage sale or post items for sale on community bulletin boards.
- Post your items online, at freecycle.org, eugene.craigslist.org or facebook.com/markplace.
- Donate clothing and household items in good condition. Many charitable organizations accept drop-off, and provide a receipt for tax deductions.



NO Illegal Dumping

Ask property manager how to dispose of items that do not fit in the dumpster.

- Disposal options in the community
- Guide for property managers
- Moving guide

- On-Site recycling guide
- Sample tenant agreement
- These four don't go

- What to do with bulky waste
- Waste prevention tips

Download these resources and educational materials for multifamily communities at lanecounty.gov/wastewise-multifamily.

Produce, meat, bones...it's all compostable in yard waste carts in Eugene, Springfield & Veneta! LaneCountyOR.gov/WasteWise-Food



Curbside garbage & recycling

Oregon Opportunity to Recycle laws require that cities with populations over 4,000 ensure recycling services are provided to all curbside garbage customers.



In Lane County, some cities franchise with a single company (Coburg, Cottage Grove, Creswell, Springfield, and Veneta); some cities issue licenses to more than one company (Eugene and Florence); and others provide collection through a public works department (Junction City).

Lane County is responsible for ensuring garbage companies comply with state laws outside the city limits and inside the urban growth boundaries of these cities.


In unincorporated areas, collection services are unregulated. Lane County ensures the opportunity to recycle exists for these areas by operating drop-off locations at 15 Lane County transfer stations for garbage and recycling. See p. 20-21 for locations, hours, and fees.

Curbside roll carts

Curbside carts should be spaced three feet apart from one another. The carts should be placed for collection no earlier than 7 p.m. on the evening before the collection day and removed by midnight on the day of collection. Carts should be placed on the street with the wheels against the curb but not where they block sidewalks or bike lanes.

City, county, & state contacts

City of Coburg	coburgoregon.org	(541) 682-7850
City of Cottage Grove	cottagegrove.org	(541) 942-3349
City of Creswell	ci.creswell.or.us	(541) 895-2531
City of Eugene	eugenerecycles.org	(541) 682-6835
City of Florence	ci.florence.or.us	(541) 997-8237
City of Junction City	junctioncityoregon.gov	(541) 998-3125
City of Lowell	ci.lowell.or.us	(541) 937-2157
City of Oakridge	ci.oakridge.or.us	(541) 782-2258
City of Springfield	springfield-or.gov	(541) 726-3753
City of Veneta	venetaoregon.gov	(541) 935-2191
Lane County Waste Management Division	lanecountyor.gov/waste	(541) 682-4120
Association of Oregon Recyclers	oregonrecyclers.org	(503) 233-3056
Oregon Department of Environmental Quality	oregon.gov/deq	(541) 686-7838
Oregon Refuse and Recycling Association	orra.net	1(800) 527-7624

 Curbside carts should be three feet apart no earlier than 7 p.m. the night before pickup. LaneCountyOR.gov/Curbside

Garbage & recycling companies

Contact the companies on this page to start curbside garbage and recycling services. Contact your garbage company directly if you have questions about commingle recycling, cart placement, inclement weather, etc. Garbage and recycling companies operate daily in Lane County, often in the early morning or at night. Trucks stop frequently, and the job requires that drivers get in and out of their cabs. Please use caution when you see garbage and recycling trucks.



Company	Service Area	Phone	Email
Action DropBox *	Eugene	(541) 345-9085	info@laneforest.com
Apex Recycling & Disposal *	Eugene, Santa Clara	(541) 607-2042	info@apexdisposalservices.com
City of Junction City	Junction City	(541) 998-3125	utilitybilling@ci.junction-city.or.us
Coburg Sanitary Service, Inc *	Coburg, Eugene (drop box only)	(541) 683-5929	richardnealon2@aol.com
Cottage Grove Garbage Inc *	Cottage Grove, Saginaw, South Lane County	(541) 942-8321	cggarbage@yahoo.com
Countryside Disposal & Recycling	Crow, Eugene, Fox Hollow, Lorane Highway	(541) 687-1259	
County Transfer & Recycling *	Dunes City, Florence, Mapleton	(541) 997-8233	customerservice2041@wcnx.org
Ecosystems Transfer & Recycling	Alvadore, Cheshire, Crow, Elmira, Noti, Lorane, Walton	(541) 935-2655	office@ecosystems-transfer.com
Eugene Drop Box	Eugene (commercial only)	(541) 689-6892	
McKenzie Disposal	Camp Creek, McKenzie, Marcola areas	(541) 988-3016	mckenziedisposal@gmail.com
Mohawk Valley Sanitation	Marcola & Springfield	(541) 933-2932	
Oakridge Sani-Haul	Oakridge, Westfir	(541) 782-3411	sanihaul1@gmail.com
Republic Services	Rural areas surrounding Junction City	(541) 928-2551	
Royal Refuse *	Eugene & surrounding rural areas	541) 688-5622	
Sanipac, Inc *	Eugene, Springfield, Pleasant Hill & surrounding areas	(541) 736-3600	cust2013@wcnx.org

*Provide residential drop box service

NOT accepted for disposal at the curb

- Appliances
- **Asbestos containing materials**
- Electronic waste (TVs, Computers, Monitors & CPUs)
- Hazardous waste (Flammable Liquids, Pesticides, Oil, Paint, Acids, Pool Chemicals, PCBs & other Chemicals)
- **Hot or burning materials**
- Lead-acid batteries
- Liquids
- Motor oils
- Radioactive materials (Except smoke detectors)
- Sharps
- Tires

ITEMS ACCEPTED AT LANE COUNTY TRANSFER STATIONS

The items listed above are accepted at **select** Lane County transfer stations (**except those in red**). For a full list of items accepted and associated fees, see p. 22-24. For asbestos-related questions, see p. 27. For more information, visit lanecounty.gov/recycle or call (541) 682-4120.

 Lane County transfer stations collect motor oil, car batteries & electronics at no charge. LaneCountyOR.gov/Recycle



Recycle Right!

If in doubt, find out, or leave it out!

With so many items to sort, knowing what is and isn't recyclable can be confusing.

Always keep the following five items out of your household recycling bin. Check the Waste Wise Lane County app at lanecountyor.gov/recycle for more information on alternatives to recycling these items.

1. Batteries

All batteries—lithium, rechargeable and single-use, batteries in electronics and musical greeting cards.

Why they don't belong

Batteries can cause fires, burns, and other environmental damage when not disposed of properly.



2. Clothing, textiles, and fabric

Clothing and curtains.

Why they don't belong

Clothing does not belong in your recycling bin and will be thrown away if it arrives at a recycling facility. Donate old clothing to thrift stores.



3. Frozen food boxes

Ice cream boxes, butter boxes, and microwavable meals.

Why they don't belong

Frozen food boxes and other paper packaging intended for the refrigerator or freezer (like butter boxes and ice cream containers) often have a plastic coating that makes them unrecyclable at a paper mill. Please place in the garbage.



4. Plastic bags and plastic wrap

Plastic bags, produce bags, plastic wrap (e.g., cling wrap, dry cleaner bags, and the plastic packaging for toilet paper and paper towels).

Why they don't belong

Plastic bags and wrap are not recycled when you put them in your curbside bin, and they can also cause other recyclable materials to get thrown out. Plastic bags and plastic wrap get wound up in the machinery at the recycling center and can cause severe, expensive damage.



5. Styrofoam™

Packing peanuts, blocks, to-go boxes, and containers.

Why it doesn't belong

Styrofoam products are not accepted in curbside recycling programs because they are difficult to sort from other materials and often break into small pieces.



'Registered' community collectors gather #2, #4, & #5 plastics. Learn more. LaneCountyOR.gov/PlasticsCollection

Curbside recycling

Follow your garbage & recycling company's instructions

Collect these together

Items must be clean, dry & free of food residue.

Paper

- Cereal, soap & shoe boxes
- Computer & miscellaneous paper
- Corrugated cardboard
- Egg cartons
- Junk mail & catalogs
- Magazines & phone books
- Newspaper
- Paper bags & paper gift wrap



No food contaminated paper, to-go boxes, paper plates, cups, napkins, towels or tissues, shredded paper, or waxed cardboard.



Metal

- Aluminum cans, foil, & trays
- Steel & tin cans



Do not flatten. No lids. Ball up foil into large ball.

Plastics

- #1 and #2 plastic bottles, jugs and plastic jars larger than a tennis ball.



NO OTHER PLASTIC. Do not flatten. No lids.

Check with your garbage company, as services vary.

Glass bottles & jars

Set glass out separately



Empty & rinse containers. Labels are OK.
No lids. No dirty or broken glass.

Check with your garbage company, as services vary.

Motor oil ONLY (NO other auto fluids)

Set motor oil out separately

Store in plastic container with a screw top. Ask your garbage company where to place container.



Check with your garbage company, as services vary.

Yard debris

Set yard debris out separately

- Brush & fruit tree discards
- Grass clippings, leaves & weeds
- Limbs under 4" diameter
- Plants & flowers

**NO
Dirt
Lumber
Pet waste
Rocks
Root wads
Stumps**

Eugene, Springfield & Veneta residents can add food waste in yard waste bins (i.e., meat, dairy, vegetable scraps, etc.)

Check with your garbage company, as services vary.



'Not sure if it's recyclable? Find out, or leave it out of the recycling bin. LaneCountyOR.gov/WasteWise-App

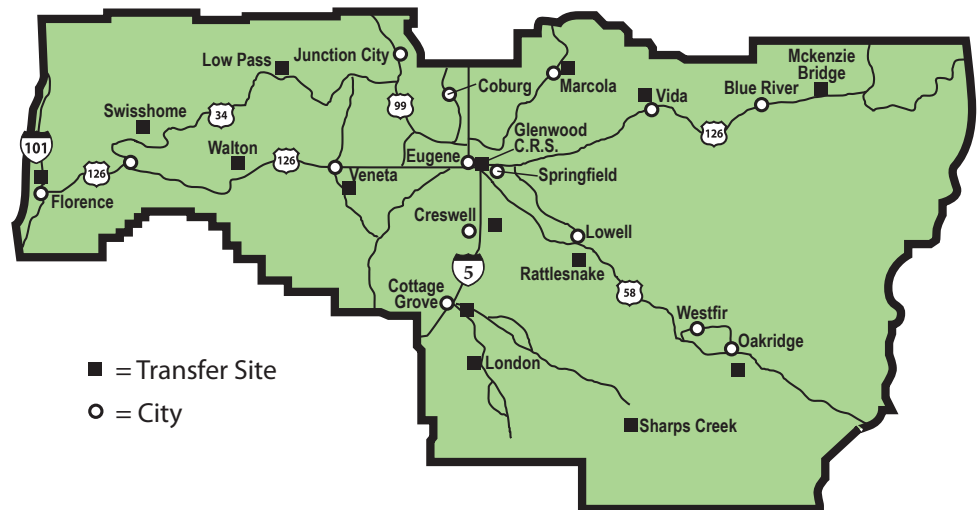


Lane County transfer stations

Transfer stations are open to the public for self-haul drop off of recycling and garbage. Lane County transports garbage to Short Mountain Landfill in large loads—reducing traffic to and from the landfill and saving energy, time, and money. Much of the recyclable materials, such as scrap metal, yard debris, and wood waste are transported by Lane County to privately owned facilities for processing. Other materials are collected and recycled on a contractual basis by private companies and non-profit organizations.

Garbage fees fund all programs offered by the Lane County Waste Management Division. **NO INCOME OR PROPERTY TAXES** are used to pay for these programs.

NOTE: There is a 10 cubic-yard limit on daily garbage dropoffs per customer at all rural sites (excluding Glenwood). Lane County transfer stations are generally set up for residential or household disposal quantities. Commercial quantities should be diverted to commercial disposal outlets, as commercial quantities are limited at transfer stations. For more information, visit lanecountyor.gov/recycle or call (541) 682-4120.



Garbage fees

Quantity	Rural Sites	Glenwood & Florence
Up to 1 cubic yard (cy)	\$13.00 (min. fee)	\$13.00 min. fee
1+ to 3 cubic yards	\$23.00	\$95.16/ton
Each cubic yard over 3	\$11.50/cy (5.75 min. fee)	\$95.16/ton
Construction & Demolition	\$17.00/cy (min. fee \$13.00)	\$95.16/ton
Rubble, Roofing, Stumps, Rock, Dirt	\$45.00/cy (min. fee \$22.50)	\$95.16/ton

For additional fees (e.g., appliances, propane tanks, mattresses, wood waste, yard debris, see p. 24).

Fees subject to change without notice, visit lanecountyor.gov/waste or call (541) 682-4120.

Check our website & social media for the latest on weather-related & holiday closures. LaneCountyOR.gov/Waste

Payments accepted

We accept cash, checks, and *credit/debit cards.

*Credit cards are not currently accepted at London, Low Pass, McKenzie Bridge, Sharps Creek, Swisshome, and Walton Transfer Stations.

How are fees determined?

Fees are calculated by weight or volume, depending upon the transfer station.

Discounts

Senior discount per load (60+ years) — \$1.00 off*

Recycling discount per load (10 pounds min.) — \$1.00 off*

* Discounts can be donated to Food for Lane County.

Cover the load

It's against the law to litter on Oregon roadways. Load your vehicle with garbage first and recycling last so you can easily drop off recyclables and get the \$1.00 recycling discount.



Transfer station hours

Summer hours: April 1 – September 30

Winter hours: October 1 – March 31

Hours & days subject to change without notice.

Transfer Stations	Summer Hours	Winter Hours
Cottage Grove 78760 Sears Rd.	Wed-Sat, 8 a.m.-6 p.m. (ALL YEAR)	
Creswell 34293 Cloverdale Rd.	Wed-Sat, 8 a.m.-6 p.m. (ALL YEAR)	
Florence 2820 N. Rhododendron Dr.	Mon-Sat, 8 a.m.-6 p.m. (ALL YEAR)	
Glenwood 3100 E. 17th Ave., Eugene	Mon-Sat, 8 a.m.-6 p.m. Sun, 8 a.m.-5 p.m.	Mon-Sat, 8 a.m.-6 p.m. Sunday: closed
London 73111 London Rd., Cottage Grove	Sat only. 9 a.m.-5 p.m. (ALL YEAR)	
Low Pass 22377 Hwy. 36, Cheshire	Fri-Sat. 9 a.m.-5 p.m. (ALL YEAR)	
Marcola 38935 Shotgun Creek Rd.	Wed-Sat, 8 a.m.-6 p.m.	Wed-Sat, 9 a.m.-5 p.m.
McKenzie Bridge 55805 McKenzie Hwy., Blue River	Sat only. 9 a.m.-5 p.m. (ALL YEAR)	
Oakridge 48977 Kitson Springs Rd.	Wed-Sat, 8 a.m.-6 p.m.	Wed-Sat, 9 a.m.-5 p.m.
Rattlesnake 82572 Rattlesnake Rd., Dexter	Wed-Sat, 8 a.m.-6 p.m.	Wed-Sat, 9 a.m.-5 p.m.
Sharps Creek 74540 Sharps Creek Rd., Culp	Sat only. 9 a.m.-5 p.m. (ALL YEAR)	
Swisshome 13711 Hwy. 36	Sat only. 9 a.m.-5 p.m. (ALL YEAR)	
Veneta 24444 Bolton Hill Rd.	Mon-Sat, 8 a.m.-6 p.m. (ALL YEAR)	
Vida-Leaburg 43843 McKenzie Hwy., Leaburg	Wed-Sat, 8 a.m.-6 p.m.	Wed-Sat, 9 a.m.-5 p.m.
Walton 18585 Transformer Rd.	Sat only. 9 a.m.-5 p.m. (ALL YEAR)	

Do transfer stations accept credit cards? Are microwaves accepted? Our 'Tips' brochure has answers. LaneCountyOR.gov/Recycle



Garbage & Recycling

Free recycling at transfer stations

Recycle these materials at all transfer stations for FREE	Cottage Grove	Creswell	Glenwood	Florence	London	Low Pass	Marcola	McKenzie Bridge	Oakridge	Rattlesnake	Sharps Creek	Swisshome	Veneta	Vida	Walton
Aluminum															
Corrugated Cardboard															
Newspaper & Ads	Recycle these at all transfer stations in the mixed recycling bins.														
Mixed Paper															
Plastics #1 & #2 Bottles, Jugs & Jars															
Tin & Steel Cans															
Antifreeze (15 Gal. Max.)	•	•	•	•	•	•	•	•	•	•		•	•	•	•
Batteries—Auto, Lithium* (see p. 23) & Rechargeable	•	•	•	•	•	•	•	•	•	•		•	•	•	•
Electronics Waste	•	•	•	•			•		•	•			•	•	
Fluorescent Lamps			•												
Glass Bottles & Jars	•	•	•	•	•	•	•	•	•	•		•	•	•	•
Motor Oil (15 Gal. Max.) & Oil Filters	•	•	•	•	•	•	•	•	•	•		•	•	•	•
Paint (Glenwood Only)			•												
Reusable Items			•												
Scrap Metal	•	•	•	•	•	•	•	•	•	•		•	•	•	•
Sharps (Needles)	•	•	•	•	•	•	•	•	•	•		•	•	•	•
Shredded Paper	Recyclable at Garten Services by appointment only. (541) 868-1550														
Styrofoam			•												

Materials can change without notice. Visit lanecountyor.gov/recycle or call (541) 682-4120.

For the most updated recycling info, use the Waste Wise App.
LaneCountyOR.gov/Recycle

Material preparation for items recycled for FREE

Lids & labels OK. Rinse, all containers free of food residue. **NO dirty material or shiny, flexible plastic pouches.**

Corrugated cardboard & brown paper bags only. Flatten boxes. **NO other paper boards, waxed cardboard, or packing material.**

Paper & ads OK. **NO plastic wrappers or bags, rubber bands, or non-paper samples or promotions.**

Printer & fax paper, junk mail, magazines, cereal/shoe boxes & paper egg cartons OK. No need to remove staples, windows, or adhesives. Place in commingle if no separate bin. **NO cups, plates, paper towels, diapers, Kleenex, or shredded paper.**

#1 and #2 plastic bottles, jugs, and jars ONLY. Must be larger than a tennis ball. **NO other plastics. Lids are garbage.**

Lids & labels OK. Rinse, all containers free of food residue.

Household only. Maximum 15 gallons per day. Store in container with secure lid. **NO Contaminants (oil, fuel, etc.). Empty antifreeze containers are NOT recyclable. Put in trash.**

Lead-acid only. **NO hybrid or electric car batteries.** All rechargeable & single-use batteries. **NO alkaline batteries (OK to toss in garbage). NO commercial or industrial batteries.** (see p.33) * **LITHIUM BATTERIES DO NOT GO IN GARBAGE. Schedule appointment with Hazardous Waste for proper disposal at lanecountyor.gov/hazwaste or (541) 682-4120 (see p. 33).**

Maximum 7 items per day. TV's, computer CPUs, monitors, printers, mice, phones, stereos, VCRs, & DVD players. **NO commercial or floor-standing copiers, parts, dismantled or salvaged units, speakers, reel-to-reel, or packaging.** (see p. 32)

Household only. Maximum 10 fluorescent lamps per visit. **NO incandescent bulbs, broken fluorescent lamps, or lamps taped together.**

Bottles & jars only. Empty & dry, all colors. **NO caps, lids, light bulbs, broken glass, window glass, ceramics, drinking glass, or Pyrex.**

Household only. Maximum 15 gallons per day. **NO PCBs, water, brake fluid, contaminants, gasoline, diesel, or solvents from commercial businesses. Empty motor oil containers are NOT recyclable. Put in trash.**

Household only. Maximum 20 gallons. Measured in can size, not contents. Architectural paint only. **NO industrial paints, empty containers, rusty cans, or illegible labels. Paint is recycled at Glenwood only.** (see p. 31)

Magazines, books, clothing, housewares OK. Acceptable items will be screened by St. Vincent de Paul staff on site.

All items 75% metal or more. Remove all fuel, oil, & other liquids. Drums, barrels, & other containers must have large, visible holes. **NO liquids, fluids, refrigerators, freezers, water coolers, heat pumps, air conditioners, dehumidifiers or pressurized containers. Remove glass plates from microwaves.**

Household only. Pack securely in red, rigid, sealed container (red laundry detergent bottles OK). **NO other containers (glass, milk jugs, coffee cans, or non-rigid containers, etc.), or material from care facilities, clinics, or other businesses.** (see p. 31)

Place in the Mixed Paper bin. It should be bagged in a paper bag. **NO plastic/credit cards, etc.**

Household only. White, block Styrofoam. Must be clean and dry. See St. Vincent de Paul staff on site. **NO urethane or "spray" foams, food containers, packing peanuts, or small, broken pieces allowed.**



Garbage & Recycling

Recycling items with a fee at transfer stations

Recycle these materials for a FEE	Cottage Grove	Creswell	Florence	Glenwood	London	Low Pass	Marcola	McKenzie	Oakridge	Rattlesnake	Sharps Creek	Swisshome	Veneta	Vida	Walton
Appliances (Freon Containing)	•	•	•	•	•	•	•	•	•	•		•	•	•	•
Concrete				•											
Mattresses				•											
Propane Tanks	•	•	•	•	•	•	•	•	•	•		•	•	•	•
Tires (Passenger & Light Trucks)	•	•	•	•	•	•	•	•	•	•		•	•	•	•
Wood Waste	•		•	•											
Yard Debris	•		•	•											

Material preparation for recovered items with a FEE

Appliances	Units containing refrigerants only. Must be empty. Air conditioners, freezers, heat pumps, RV refrigerators & refrigerators. DO NOT cut cords or drain refrigerants. NO other appliances, or commercial units.	\$22.00 each See p. 36 in the <i>Reuse & Recycle Directory</i> Some appliances accepted for free as "Scrap Metal" (see p. 22-23).
Concrete	Glenwood only — grocery cart-sized chunks or smaller (max. 10 cys). Rural sites — 1' x 1' or smaller, 3 cys or less accepted as garbage.	Glenwood: \$95.16 per ton. Rural: \$45.00 per cy — \$22.50 min.
Mattresses	Mattresses & box springs recovered at Glenwood only, clean & dry (max.10 units per day). Florence & Rural sites accept mattresses as garbage (up to 4 units per day).	Glenwood \$14 per mattress, up to 4 units 5 or more \$220.87/ton — \$70.00 min. Florence \$14 per mattress. Rural sites: charge by volume (see p. 20).
Propane & Helium Tanks	Maximum size, 5 gal. Propane & single-use helium cylinders. NO other gasses or cylinder types.	Up to 5 gal — \$4.50 1-lb camping — free
Tires (Passenger & Light Truck)	Maximum 10 tires. Tires up to 20" rim diameter. NO heavy duty truck, tractor, or off-highway tires. Call (541) 682-4120 for referral.	Up to 20" rim diameter — \$3.00. Up to 20" rim diameter with wheel —\$4.00.
Wood Waste	Wood Waste: Broken furniture, painted wood, particle board, pallets, wood with nails or screws. NO Formica, foam core, or plastic coated, treated wood, non-wood laminates, mixed materials, railroad ties, hardware bigger than your thumb. NO bags.	Glenwood & Florence: \$84.70 per ton — \$9.00 min. Cottage Grove: up to 1 cy — \$9.00 Over 1 cy to 3 cys — \$17.50 Over 3 cys — \$9 per additional cy.
&		
Yard Debris	Yard Waste: Cut grass, brush, leaves, plants, trimmings, or limbs under 12" diameter. NO pet waste, to-go containers, liquids, garbage. NO bags.	

Fees subject to change without notice. Visit lanecountyor.gov/recycle or call (541) 682-4120.



Looking for the most updated fees? Make sure to check online, too. LaneCountyOR.gov/Recycle

Report illegal dumping

Lane County's Nuisance Abatement Program cleans up illegal dump sites along county roads. When identified, illegal dumpers face civil citations and may be ordered to pay the cost of cleaning up the site. You can help by reporting illegal dumping on county right-of-ways:

- Record the date, time, and exact address.
- Write down the license plate number and vehicle description if possible.
- **DO NOT TOUCH OR REMOVE ANYTHING!**

To report a dump site on a road maintained by Lane County, visit lanecountyor.gov/keeplanekeepclean, email illegaldumping@lanecountyor.gov, or call (541) 682-4533.

Report dumping on non-county-managed roads

Illegal dumping in city boundaries: contact specific cities

Eugene: (541) 682-4800

Springfield: (541) 726-3761

Illegal dumping on state/federal highways: (541) 744-8080



Report dump sites on county-managed roads. Call (541) 682-4533 or use the WasteWise App. LaneCountyOR.gov/KeepLaneClean



Construction & demo recycling

Lane County requires all loads of construction and demolition materials measuring six cubic yards or more to be separated for recycling or delivered to **EcoSort (ecosort.com)**, a materials recovery facility (MRF) for sorting.

This requirement applies to Glenwood and Short Mountain ONLY. Loads that DO NOT contain the targeted recyclable materials can be disposed of as usual. The targeted materials are:

- Cardboard
- Metal
- Recoverable wood
- Rubble
- Yard debris

These materials are recyclable at the Glenwood transfer station and other facilities in the community. Visit lanecountyor.gov/recycle to find recyclers and lanecountyor.gov/constructionwaste for more information about this rule.



Lane County sustainable deconstruction training project (Cottage Grove, Fall 2023).



Material	Location	Contact
Mixed loads of construction debris	EcoSort	(541) 726-7552
Source-separated wood	Lane Forest Products/Action Drop Box Rexius	(541) 345-9085 (541) 342-1835
Source-separated concrete	Delta Sand & Gravel Lane Forest Products RiverBend Materials	(541) 688-2233 (541) 345-9085 (541) 683-6400
Source-separated metal and wire scrap	Mid Valley Metals Recycling Pacific Recycling Schnitzer Steel	(541) 747-0168 (541) 461-3443 (541) 686-0515

Stay up on the latest C&D waste & recycling news.
LaneCountyOR.gov/Construction-Waste

Asbestos disposal

Why is asbestos hazardous?

Asbestos contains microscopic mineral fibers that easily become airborne and inhaled during construction projects. Exposure to airborne asbestos is associated with lung cancer, mesothelioma, asbestosis (similar to black lung), and other cancers. Asbestos is found in commercial, industrial, and residential settings and various consumer products. Although its use has diminished, there are still homes and buildings that contain asbestos building materials, like plaster texturing materials (popcorn ceiling), vinyl-asbestos tile, sheet-vinyl flooring with asbestos backing, cement-asbestos board, and some insulation and roofing materials.



Handling asbestos and safe asbestos removal

Asbestos disturbed in a demolition or remodeling project can become airborne and harm you and others. For more information about asbestos and asbestos abatement, visit Lane Regional Air Protection Agency (LRAPA) at lrapa.org, email asbestos@lrapa.org, or call (541) 736-1056.

Disposal of asbestos-containing building materials

The Lane Regional Air Protection Agency requires that Lane County Waste Management Division staff screen for and prevent the acceptance of asbestos in materials brought to Lane County transfer stations. Disposal of asbestos-containing materials is strictly prohibited at all Lane County transfer stations.

Per Oregon law, Lane County requires that suspect construction materials manufactured or installed before 2004 be accompanied by an analytical report indicating that the material contains less than one (1) percent asbestos. Lane County cannot accept these materials for disposal as trash without this documentation. Oregon law also requires that any structure built pre-2004 (including RVs, campers, trailers, etc.) be surveyed for the presence of asbestos by a certified inspector before demolition occurs. Lane County will not accept these demolition materials unless accompanied by a copy of the inspector's report indicating that the materials sampled contain less than one (1) percent asbestos.

Asbestos-containing materials are accepted for special disposal by appointment at Short Mountain Landfill only. Special packaging and handling requirements apply.

For information about your project and the safe removal of asbestos from your home and abatement, visit lrapa.org, email asbestos@lrapa.org, or call (541) 736-1056.



For specific questions about asbestos packaging and disposal, contact Lane County staff.

Chad Ficek
(541) 682-3828
chad.ficek@lanecountyor.gov

Jake Schiewe
(541) 682-3899
jake.schiewe@lanecountyor.gov



Got asbestos? Get the info & forms you need.
LaneCountyOR.gov/Asbestos



Sharps disposal



Household hypodermic needles and lancets are accepted at all Lane County transfer stations (EXCEPT Sharps Creek) for FREE (see p. 22-23 for locations). It is **illegal in Oregon to dispose of syringes and other medical sharps in the garbage** due to the dangers posed to workers. By law, **needles and lancets must be placed in a red, rigid, leak-proof, puncture-resistant containers** before disposal. **Sharps containers are available at pharmacies** and are strongly recommended as they protect waste handlers. Other red/orange rigid containers may be acceptable.



NOT ACCEPTABLE: Coffee cans, beverage containers, milk jugs, etc.

Group homes, health-care facilities, veterinary clinics, and other commercial offices must make special arrangements to dispose of sharps and other autoclaved wastes and **CANNOT use transfer stations** for disposal. For more information, call (541) 682-4120.

Paint disposal & recycling



Local paint stores provide convenient drop-off options for house paint. Ask your favorite local store. Or, for a list of participating locations, visit PaintCare.org and enter your zip code. Lane County's Glenwood transfer station is a PaintCare collector. Take paint to the recycling area.

- Glenwood Transfer Station accepts up to 20 gallons of paint (measured in can size, not contents). For more than 20-gallon dropoffs, make a hazardous waste appointment online at lanecountyor.gov/hazwaste or call (541) 682-4120.
- Labels must be intact and legible.
- No rusty cans, holes, or leaks.
- Only architectural paint and stain—no industrial paints or coatings.



If you have paint not accepted in the PaintCare program, schedule a hazardous waste appointment online at lanecountyor.gov/hazwaste or call (541) 682-4120.



Live in a rural community? Visit LaneCountyOR.gov/HazWaste to view Hazardous Waste Collection events in your area.

Hazardous waste

Many everyday household products contain hazardous ingredients. From paints and hobby supplies to bathroom cleaners, pool, and lawn care products, anything with a “**danger**,” “**warning**,” “**caustic**,” or “**caution**” label can become a dangerous pollutant to groundwater and streams when not properly handled. Avoid using these products to save money and protect children and pets from exposure. When household chemical products are leftover and unwanted, contact Lane County’s Hazardous Waste Collection Center for safe disposal. It’s free for households. For more information, visit lanecountyor.gov/hazwaste or call (541) 682-4120.



Discard your hazardous waste in three easy steps

1. Schedule an appointment online via the free Waste Wise Lane County app, visit lanecountyor.gov/hazwaste or call (541) 682-4120.
2. Keep products in original labeled containers if possible or label known items. Secure containers in a box to keep them from tipping over in transit (35 gallons maximum, no commercial quantities, no drums, no empty containers).
3. Enter the Glenwood transfer station through the center lane and follow signs to the Hazardous Waste Collection Center. *Please stay inside your vehicle; staff will unload the waste for you.*

Rural collection

Rural events are scheduled several times a year. For dates and locations, visit lanecountyor.gov/hazwaste or call (541) 682-4120. Also follow Waste Wise Lane County on Facebook and Instagram for updates.



What about business hazardous waste?

Businesses, agencies, and organizations that generate small quantities of hazardous waste are called “Conditionally Exempt Generators” (CEGs) and may be eligible to participate in Lane County’s CEG collection program. Participating businesses must pre-register and pay disposal fees for their waste. For more information, visit lanecountyor.gov/hazwaste or call (541) 682-4120 for an information packet.

We CANNOT accept: asbestos, explosives, infectious waste, pressurized cylinders, radioactive waste or containers over five gallons. For information on how to dispose of these items call (541) 682-4120.

Schedule your hazardous waste appointment online today.
LaneCountyOR.gov/HazWaste



Green cleaning

Common hazardous products

Read product labels carefully before you buy, and watch for the words "**danger**," "**warning**," and "**caution**." Products with these words are considered more hazardous. Buy the least dangerous products you can to do the job, or stock up with items on the list below and make your own cleaners!



Make your green cleaning kit

Use these safe, basic supplies in various combinations to replace chemical cleaners.

- Alcohol
- Baking soda
- Borax
- Club soda
- Flour
- Hydrogen peroxide
- Lemon juice
- Liquid soap
- Salt
- Toothpaste
- Vegetable oil
- White vinegar

Try these recipes

Adhesive removal—Apply a generous amount of vegetable oil and let sit for one hour overnight. Wipe away the adhesive.

Pot and surface scrub—Sprinkle with baking soda, spray with white vinegar, let bubble and sit, wipe off, and rinse.

Crayon remover—Rub the mark with toothpaste and a damp cloth. Do not use on non-vinyl wallpaper.

Papercraft glue—Mix a small amount of warm water and flour to form a paste. Use small amounts at a time.



ALL-PURPOSE SPRAY

- 2 cups water
- 2 tablespoon white vinegar
- 1 teaspoon liquid soap
- 1 teaspoon borax

For green cleaning recipes, visit LaneCounty.org/greencleaning.

Do not dispose of hazardous products in the garbage or down the drain.

For disposal of household hazardous products, schedule online at lanecountyor.gov/hazwaste, or call (541) 682-4120 to make an appointment.



Seeking tips? Sign up for our newsletter to receive the Waste Wise Tip of the Month! LaneCountyOR.gov/WasteWise

Switch to eco-friendly cleaners

Editor's Note: This article originally appeared in MOM Magazine in February 2023.

By Paige Hopkins of Beyond Toxics

The sustainable lifestyle movement's increasing popularity has caused people to examine their consumption and buying habits.

Following warnings from scientists, the public is catching on to the fact that many chemicals in everyday household products can harm the environment and one's health. The challenge to interested consumers, however, can be the cost and accessibility of green products. Cheaper products are often imported from countries with few restrictions on chemicals known to cause cancer. Products posing significant health risks are more likely to be marketed to young adults, low-income families and people of color.

There is also a nexus between toxic cleaning products and climate change. The chemical industry uses fossil fuels to make many of its products and is the third-largest producer of greenhouse gases contributing to climate change. This industry is highly energy intensive and is not always accountable to people's health and the environment.

After doing their own research, many realize they can switch to eco-friendly cleaning products. Visit the Beyond Toxics Green Home Cleaning Campaign to learn about the risks of cleaners and do-it-yourself cleaning products that protect your health, planet and wallet. To learn more about Beyond Toxics and the Green Home Cleaning Campaign, visit [beyondtoxics.org](https://www.beyondtoxics.org).



Managing unwanted medications

Leftover and expired medicine can pose serious environmental and health risks. If not disposed of, unused drugs can lead to accidental poisoning, addiction, and abuse. Prescription medications can also have adverse health and environmental impacts when they end up in a landfill or flushed down the toilet or a drain.

The Oregon Drug Take-Back Program allows you to take medicines from your household to drop-off sites at participating locations. You can also pick up a postage-paid envelope from select locations for mailing unwanted medication for destruction. **Call (844) 4-TAKE-BACK** to locate a drop-off site near you, or visit [medtakebackoregon.org](https://www.medtakebackoregon.org) to find out where you can pick up a postage-paid envelope.



ACCEPTED: Medications in any dosage form, except those identified as "Not Accepted," in original containers or sealed bags.

NOT ACCEPTED: Herbal remedies, vitamins, supplements, other personal care products, medical devices, batteries, mercury-containing thermometers, sharps, illicit drugs, pet pesticide products, animal medicines, and biologics.

Remove personal information before mailing back or dropping off medications.



Cleaning out your medicine cabinet & don't know what to do?
Use the Waste Wise App. [LaneCountyOR.gov/WasteWise-App](https://www.lanecountyor.gov/WasteWise-App)



Fluorescent lighting disposal

All fluorescent bulbs contain mercury, a pollutant if placed in the trash. The good news: they are recyclable! Lane County has arranged convenient drop-off locations for compact fluorescent bulbs and short (4 ft. or less) lamps at many local lighting and hardware stores in the Eugene-Springfield area. For a complete list, visit lanecountyor.gov/hazwaste or ask your favorite store. Lane County's Glenwood Transfer Station recycling area accepts a maximum of 10 bulbs or tubes (8 ft. or less). Bulbs are also accepted through our hazardous waste program by appointment. **Schedule online at lanecountyor.gov/hazwaste or call (541) 682-4120.** Disposal is free for households, and minimal fees apply to businesses.



Electronic waste (e-waste) Know the law & recycling options



Electronics not only contain hazardous substances that can pose dangers if disposed of, but they also contain a host of rare substances that are highly polluting to manufacture. Consider donating repairable and reusable electronics to NextStep Recycling, Goodwill, St. Vincent de Paul or other thrift stores.

Disposing of televisions, computer monitors, CPUs, and laptops in the garbage is illegal. Oregon E-Cycles provides free recycling of computers (desktops, laptops, tablets), monitors, TVs, printers, and peripherals (keyboards and mice). To find a collector, visit oregonecycles.org or call (888) 5-ECYCLE.

Lane County is an Oregon E-Cycles collector at nine of its 15 transfer stations (see p. 20-21 for locations). **A maximum of seven items per day are accepted. The county does not take floor-standing copiers, larger quantities, and items that have been dismantled.**



Get plugged into where your e-waste should go.
LaneCountyOR.gov/HazWaste

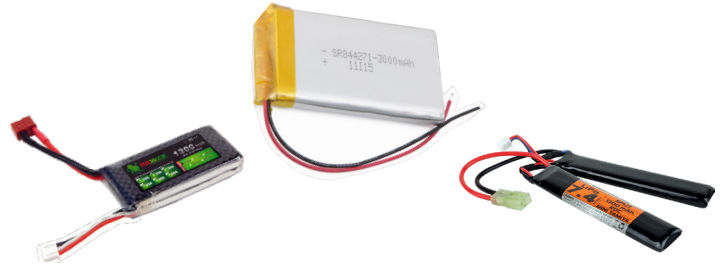
The dangers of lithium batteries



Batteries containing lithium are **dangerous and do not go in the garbage!** They can self-ignite and cause fires when the outer casing is damaged or compromised. Lithium batteries in this condition are accepted through our hazardous waste program by appointment.



Schedule an appointment online by downloading the Waste Wise Lane County app, visit lanecountyor.gov/hazwaste or call (541) 682-4120.



Battery recycling options

Alkaline batteries are free of mercury and can go into the garbage. **All other batteries—button, rechargeable, Ni-Cad, lithium, and silver oxide—can be recycled at Lane County transfer stations (see p. 22-23) and most battery and electronics stores.** Use the Waste Wise app (lanecountyor.gov/recycle) to find the nearest location. Call2recycle.org also offers free mail-in service for rechargeable batteries—a good resource for schools and businesses.



Alkaline batteries go in the garbage.



Rechargeable alkaline



Power tool batteries



Button batteries

Rechargeable and other non-alkaline batteries should be recycled.

Composting at home: reduce methane, enrich your soil

Compost is easy to make and offers many benefits, from helping your soil retain moisture to reducing the need to purchase and haul soil, fertilizers, and pesticides. The essential ingredients for compost are "browns," "greens," air, and water. "Browns," like fall leaves and woody materials, are high in carbon—an essential energy source for microorganisms in the compost. "Greens," like grass clippings, fruit scraps, and vegetable trimmings, are high in nitrogen—a necessary nutrient for the decomposer microorganisms.

Earth Machine

Lane County partners with BRING to ensure Earth Machine composters are available year-round. Stop by BRING at 4446 Franklin Boulevard in Eugene, visit bringrecycling.org, or call (541) 746-3023.



Worm Factory

Worm castings provide valuable plant nutrients in a short amount of time, using very little space. The Worm Factory makes harvesting the castings easy. Select the basic model at naturesfootprint.com and enter discount code "LANECOUNTY" during checkout. Worms are available through OSU Extension and local garden stores.

Master Gardener Program



Oregon State University
Extension Service
Master Gardener

Learn how to compost at several demonstration gardens throughout the county featuring self-guided tours and workshops offered

by the OSU Extension Service (in partnership with the City of Eugene). Visit lanecountyor.gov/wastewise-yards for a schedule of compost workshops throughout Lane County. For more information about the Master Gardener Program, visit extension.oregonstate.edu/lane or call (541) 344-5859. Printed information is available at the Master Gardener Program office at 996 Jefferson Street, Eugene.



Call Master Gardener Plant Clinic (541) 344-0265 for more information and hours.

Learn ways to build healthy soil & cultivate plants sustainably. LaneCountyOR.gov/WasteWise-Yards

Gardening without pesticides or herbicides

Garden chemicals can harm humans, pets, wildlife (pollinators), and waterways. The good news is that there are many ways to care for your lawn and garden and avoid using pesticides and herbicides. While “weed and feed” and other weed and bug killers may offer short-term convenience, many ingredients in these products harm people, pets, and pollinators—and pollute the waterways we rely on.

Lawn care without chemicals

Mulch-mow (or grasscycle) to save time, money, and health. Clippings act as free fertilizer. Leave the clippings or rake them in.

- Mow regularly when the grass is dry, taking only about 1/3 off the top. Aim for 3” in height. This height shades out weeds and encourages deeper roots.
- Sharpen mower blades at least once a year. Consider buying a push-reel mower or mulching electric mower without the noise and exhaust of gasoline-powered mowers.
- Hand pull weeds.



Weed control without chemicals

- Clean up garden debris in the fall/winter. Many pests lay eggs in the leaf litter to hatch the following year.
- Neem oil, diatomaceous earth, and insecticidal soap work as well as pesticides without risking chemical harm to children, pets, pollinators, and waterways.
- Beneficial insects such as ladybugs and nematodes are widely available to target specific problems. Research online or ask your favorite garden store for more information.
- Make your pest sprays using common household ingredients such as garlic cayenne, Epsom salts and dish soap. You'll find easy recipes online.



Garlic



Cayenne



Epsom salts



Dish soap

To dispose of pesticides or herbicides, schedule a hazardous waste appointment online by downloading the Waste Wise Lane County app, visit lanecountyor.gov/hazwaste, or call (541) 682-4120.



Dispose of pesticides or herbicides the right way.
Schedule with hazardous waste. LaneCountyOR.gov/HazWaste



Appliances (see p. 24 for Lane County transfer station options)

Free Appliance Removal	totallyfreeappliance.com	(541) 844-6867
Habitat for Humanity ReStores	habitatlanerestore.org/restores	(541) 344-4809
Pacific Recycling	pacificrecyclinginc.net	(541) 461-3443
Radius Recycling	radiusrecycling.com	(541) 686-0515
St. Vincent de Paul (recycling)	svdp.us	(541) 687-5820

Arts & Craft Materials

MECCA	materials-exchange.org	(541) 302-1810
-------	--	----------------

Asbestos (see p. 27)

Lane County Waste Management	lanecountyor.gov/hazwaste	(541) 682-4120
Lane Regional Air Protection Agency	lrpa.org	(541) 736-1056

Asphalt & Concrete (see p. 24 for Lane County transfer station options)

Delta Sand & Gravel	deltasg.com	(541) 688-2233
RiverBend Materials	rbmaterials.com	(541) 683-6400
Lane Forest	laneforest.com	(541) 345-9085

Auto Batteries (see p. 22 for Lane County transfer station options)

Continental Battery Systems	batterysystems.net	(541) 689-9134
Batteries Plus Bulbs	batteriesplus.com	(541) 349-5030
Battery Pro	batteryproeugene.com	(541) 683-1310
Battery X-Change	batteryxchange.com	(541) 741-4105
Interstate Batteries	interstatebatteries.com	(541) 302-6176

Batteries (see p. 22 for Lane County transfer station options & p. 33 for more information)

Batteries Plus Bulbs	batteriesplus.com	(541) 349-5030
Rechargeable Battery Recycling Corporation	call2recycle.org	1(877) 2RECYCLE

Bicycle Tire & Tube Recycling

Big B Tire Store	bigbtire.com	(541) 746-4193
------------------	--	----------------

Books & Magazine (see p.22 for Lane County transfer station options—"Reusable Items")

Assistance League of Eugene	assistancelleague.org/eugene	(541) 485-3721
Goodwill Industries	goodwill-oregon.org	(541) 345-1801
St. Vincent de Paul	svdp.us	(541) 687-5820

Cardboard Recycling (see p. 22 for Lane County transfer station options)

International Paper	internationalpaper.com	(541) 744-4100
---------------------	--	----------------

Cell Phones (see p. 22 for Lane County transfer station options—"Electronic waste")

Hope & Safety Alliance	hopesafetyalliance.org	(541) 485-8232
Lane Community College	lanecc.edu/recycle	(541) 463-5884

Lane County makes no endorsement of businesses listed in the Directory. The inclusion or exclusion from this list does not constitute an endorsement of regulatory status or environmental performance.



National Food Waste Prevention Week is every April. Get involved, learn & have fun. ***EatSmartWasteLess.Tips***

Clothing/Shoes (see p. 22 for Lane County transfer station options—"Reusable Items")

Assistance League of Eugene	assistanceleague.org/eugene	(541) 485-3721
Goodwill Industries	goodwill-oregon.org	(541) 345-1801
St. Vincent de Paul	svdp.us	(541) 687-5820

College & University Recycling Programs

Lane Community College	lanecc.edu/recycle	(541) 463-5884
University of Oregon Campus Recycling Program	cpfm.uoregon.edu/zerowaste-resources	(541) 346-0961

Computers (see p. 22 for Lane County transfer station options—"Electronic Waste" & p. 32 for more information)

Oregon E-Cycles Program	oregonecycles.org	1(888)-5-ECYCLE
-------------------------	--	-----------------

* See Electronics listing below

Construction & Demolition Material Recycling (see p. 24 for Lane County transfer station options & p. 26 for other options)

EcoSort, LLC	ecosort.com	(541) 726-7552
--------------	--	----------------

Construction Materials for Reuse

BRING Recycling	bringrecycling.org	(541) 746-3023
Habitat for Humanity ReStores	habitatlanerestore.org	(541) 344-4809

Cooking Oil (liquid only)

Baker Commodities (commercial quantities)	bakercommodities.com	(503) 289-1221
Sequential Biofuels (commercial quantities)	choosesq.com	(800) 447-3794
Sequential Biofuels	choosesq.com	(541) 736-5864

Electronics (see p. 22 for Lane County transfer station options & p. 32 for more information)

Garten Services (e-cycles)	garten.org	(541) 868-1550
Goodwill Industries (e-cycles)	goodwill-oregon.org	(541) 345-1801
NextStep Recycling (reuse, e-cycles)	nextsteprecycling.org	(541) 686-2366
St. Vincent de Paul (e-cycles)	svdp.us	(541) 687-5820

Event Recycling (see p. 9)

Elysium Events	elysiumeventsllc.com	(503) 789-2018
Lane County Master Recyclers	lanecountyor.gov/wastewise-event	(541) 682-2059
Waste Free Oregon	facebook.com/Waste-Free-Oregon	(541) 232-2307

Fire Extinguishers

A-1 Fire Protection		(541) 726-7287
National Fire Fighter Corp		(541) 485-3566

Fluorescent Bulbs & Tubes (see p. 22 for Lane County transfer station options & p. 32 for more information)**Furniture (see p. 22 for Lane County transfer station options—"Reusable Items")**

BRING Recycling (no upholstered.)	bringrecycling.org	(541) 746-302
Habitat for Humanity Restores (Eugene)	habitatlanerestore.org	(541) 344-4809
Habitat for Humanity Restores (Florence)	habitatlanerestore.org	(541) 997-5834
Habitat for Humanity Restores (Junction City)	habitatlanerestore.org	(541) 998-1139
Goodwill Industries	goodwill-oregon.org	(541) 345-1801
St. Vincent de Paul	svdp.us	(541) 687-5820

Reuse & Recycle Directory

Glass Bottles & Jars (see p. 22 for Lane County transfer station options)		
BRING Recycling - Reuse	bringrecycling.org	(541) 746-3023
Hazardous Waste & Chemicals (see p. 29 for Lane County hazardous waste disposal options)		
Lane County Waste Management Division	lanecountyor.gov/hazwaste	(541) 682-4120
NW Hazmat	nwhazmat.com	(541) 988-9823
Hearing Aids & Eye Glasses		
Oregon Lions Sight & Hearing Foundation	olshf.org	(503) 413-7399
(for a list of locations that recycle hearing aids & eye glasses)		
Mattresses (see p. 24 for Lane County transfer station options)		
Eugene Mattress Company	eugenemattressco.com	(541) 654-5622
Goodwill Industries (recycling)	svdp.us	(541) 387-5820
Metal (Scrap) Recycling (see p. 22 for Lane County transfer station options— "Scrap Metal")		
Pacific Recycling	pacificrecyclinginc.net	(541) 461-3443
Radius Recycling	radiusrecycling.com	(541) 686-0515
Motorcycles		
Cyclepsycho Motorcycle Recycling	cyclepsycho.com	(541) 461-9279
Motor Oil (see p. 22 for Lane County transfer station options)		
Oil Re-Refining, Inc	orrcorecycles.com	(503) 286 8352
Safety Kleen Corp	safety-kleen.com	(541) 747-5804
Thermo Fluids	thermofluids.com	(541) 343-0093
Newspaper Recycling (see p. 22 for Lane County transfer station options)		
International Paper Recycling	internationalpaper.com	(541) 744-4100
Pallets (see p. 24 for Lane County transfer station options—"Wood Waste")		
Eugene Pallet Enterprises	eugenepalletenterprises.com	(541) 485-0549
Pesticide Containers		
Agri-Plas (Triple rinse, caps off.)	agriplasinc.com	(971) 338-3357
Paper (see p. 22 for Lane County transfer station options)		
Garten Services (call for details)	garten.org	(541) 868-1550
International Paper	internationalpaper.com	(541) 744-4100
Plastic Containers		
Garten Services (call for details)	garten.org	(541) 868-1550
Plastic Bags		
Most major grocery stores accept residential quantities	bagandfilmrecycling.org	

Lane County makes no endorsement of businesses listed in the Directory. The inclusion or exclusion from this list does not constitute an endorsement of regulatory status or environmental performance.

COMING SOON: Your home for sustainability education resources in Lane County. WasteWiseLane.org

Eat Smart, Waste Less

Wasted food is wasted money

Did you know Oregon households could save approximately \$2,000 annually simply by using all the food they buy?



EatSmartWasteLess.Tips provides free information on food waste prevention that saves you money and preserves natural resources



Plastic Packing Peanuts

PAKMAIL, Eugene	pakmail.com	(541) 343-1313
Peanut Hotline		(800) 828-2214
The UPS Store #2576 Pioneer Plaza, Springfield		(541) 741-0411

Propane Tanks (see p. 24 for Lane County transfer station options)

Lane County Waste Management Division	lanecountyor.gov/hazwaste	(541) 682-4120
St. Vincent de Paul	svdp.us	(541) 687-5820

Printer, Inkjet, Fax & Other Cartridges

Cascade Print Source	cascadeprintsource.com	(541) 334-4465
Redundant Cartridge	redundantcartridge.com	(541) 302-1444

Styrofoam (Block Foam) (see p. 22 for Lane County transfer station options; St. Vincent de Paul staff on site)

St. Vincent de Paul	svdp.us	(541) 687-5820
---------------------	--------------------------------------	----------------

Tires (see p. 24 for Lane County transfer station options)

Big B Tire Store	bigbtire.com	(541) 746-4193
Delta Sand & Gravel	deltasg.com	(541) 688-2233
Tire Disposal & Recycling (50 or more for pick up) call for fees.	tiredisposal-recycling.com	(877) 653-8973

Tyvek Envelopes

Tyvek Recycling (mail-in recycling)		(800) 448-9835
-------------------------------------	--	----------------

X-Ray Films (medical, dental, lithographic & industrial film)

B.W. Recycling, Inc.	xrayfilmsrecycling.com/pick-up-rates/oregon.htm	(877) 217-7020
----------------------	--	----------------

Yard Debris & Wood Recovery (see p. 24 for Lane County transfer station options)

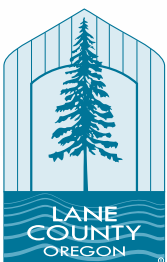
Lane Forest Products	laneforest.com	(541) 345-9085
Rexius	rexius.com	(541) 342-1835

Fix. Mend. Repair. Lane County is bringing Fix-It Fairs to our rural neighbors. Save money & have fun. More at FixItLaneCounty.org



Trash it or recycle it?

Download the
wastewise app
today!



LaneCountyOR.gov/recycle

